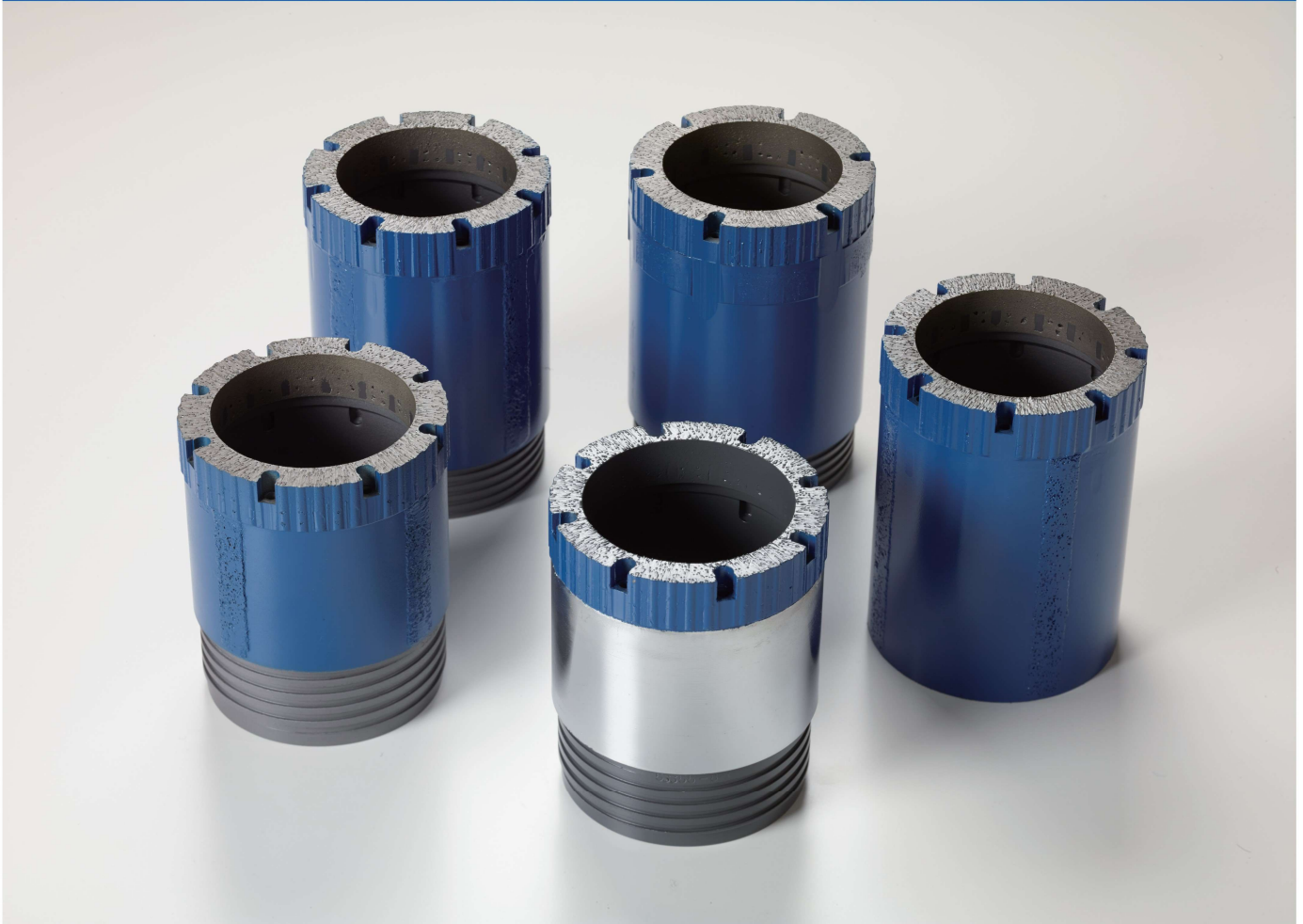


FINE BIT

Corepack original diamond series

FINE BIT, with the basic concept of "Speed," "Endurance," and "Easy," is one of the few diamond bits designed primarily for the purpose of geological survey drilling using Corepack Tube®. Various innovations have been implemented to facilitate smooth field operations, such as improving drilling speed and bit life.



Wide-ranging Matrix Compatibility

The FINE bit matrix is capable of handling everything from soft rock to extremely hard rock and fractured zones, and it can be used at low rotation and low pressure. Moreover, we have also innovated in the types of matrices to ensure they can cover as wide a range of applications as possible with a single type.

COST PERFORMANS

Considering that the performance of diamond bits significantly affects on-site costs, FINE bits focus on speed and work efficiency to not only keep running costs low but also to quickly complete the site work.

